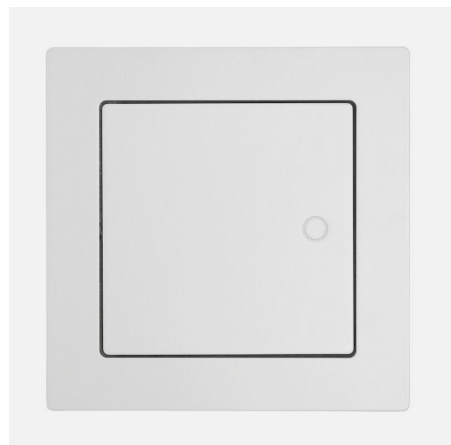
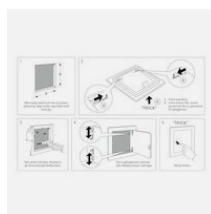
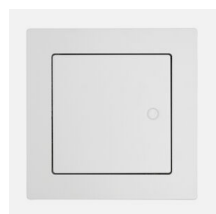


Product datasheet

Thonic tc-ue surface mounted pressure lock



Function: Thonic tc-ue pressure lock is a traditional inspection hatch fitted with a surface mounted frame. The hatch is suitable for both wall and ceiling installations. Installation is very quick as the fastening plates are pre-assembled and knocked out with a hammer behind the first drywall board or between the drywall boards when installed in double drywall. The hatch comes in standard sizes from 150 x 150 to 600 x 600 mm. Thonic tc-ue pressure lock is delivered white painted, NCS S 0502-Y. The hatch is fitted with hinged tc-gj and a pressure lock that opens and closes the hatch when pushing the hatch leaf. Thonic tc-ue pressure lock can be ordered to size with alternative sizes and in any colour.



Hole making measurements	Frame external dimensions	Light dimensions	Number of fixing pads	Locking	Art.no	Quantity
150 x 150	190 x 190	120 x 120	2	Pressure lock	4815	1
200 x 200	240 x 240	170 x 170	4	Pressure lock	4820	1
300 x 300	340 x 340	270 x 270	4	Pressure lock	4830	1
400 x 400	440 x 440	370 x 370	8	Pressure lock	4840	1
500 x 500	540 x 540	470 x 470	8	Pressure lock	4850	1
600 x 600	640 x 640	570 x 570	12	Pressure lock	4860	1



Produkten bedömd i
SundaHus Miljödata



CUSTOMER SERVICE

Tel. 033-23 03 03
Email: vsb@vsbyggskruv.se
Website: vsbyggskruv.se

ADDRESS

Västsvensk Byggskruv AB
Vävlagargatan 7
507 30 Brämhult
Sweden

