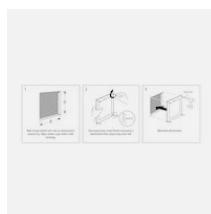




Function: Thonic tc-tk is a frame anchor cover that is fitted to the surface with the attached screw. The frame anchor cover comes in standard sizes from 150 x 150 to 600 x 600 mm. Thonic tc-tk is delivered white painted, NCS S 0502-Y.



| Hole making measurements | Frame external dimensions | Art.no | Quantity |
|--------------------------|---------------------------|--------|----------|
| 200 x 200 | 251 x 251 | 4720 | 1 |
| 300 x 300 | 351 x 351 | 4730 | 1 |
| 400 x 400 | 451 x 451 | 4740 | 1 |
| 500 x 500 | 551 x 551 | 4750 | 1 |
| 600 x 600 | 651 x 651 | 4760 | 1 |



Produkten bedömd i
SundaHus Miljödata

